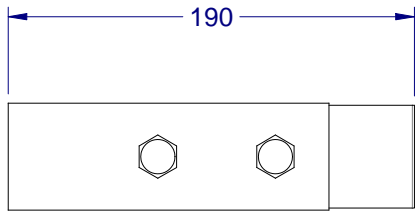


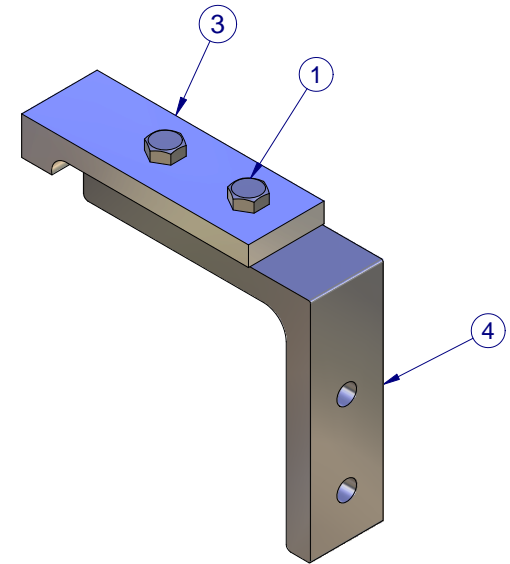
ITEM	DWG	TITLE	QTY	MASS
1	N/A	M12x40 SET SCREW	2	0.1 kg
2	N/A	M12 NUT	2	0.0 kg
3	SRS-401	BOLT-ON TONGUE	1	0.8 kg
4	SRS-402	L-BRACKET	1	1.7 kg

**MASS: 2.4 kg**

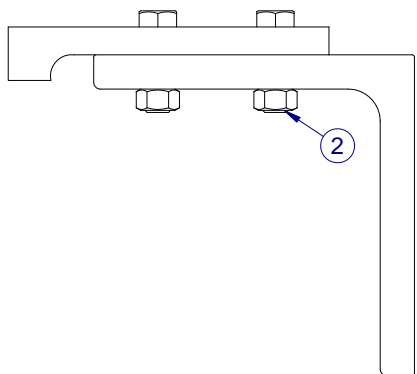
REV	DESCRIPTION / CHANGES	BY	APP'D	DATE



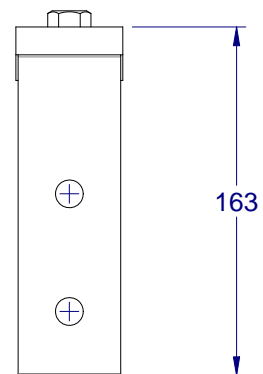
**TOP VIEW**



**ISOMETRIC VIEW**



**FRONT VIEW**



**SIDE VIEW**

GENERAL WELDING NOTES:  
 1- ALL WELDS ON OUTSIDE SURFACES ONLY  
 2- MAINTAIN ALL HOLLOW SECTIONS  
 3- THICK LINES ON ISO VIEWS SHOW VISIBLE WELD LOCATIONS ONLY




**www.csrroofing.com.au**

130 Gilba Road  
 Girraween NSW 2145  
 Ph. (02) 9896-5250  
 Fax (02) 9495-7910




**COPYRIGHT 2007 TOPCAT / CSR**  
 WARNING: Copyright in this drawing remains the property of TOPCAT / CSR and copying in whole or part is not permitted without the written authority of the copyright owner

TOLERANCES  
 (Unless otherwise noted)  
 Whole: ± 0.25 mm  
 Decimal: ± 0.1 mm  
 Angular: ± 0.25 deg.



Third Angle Projection  
 AS 1100

MATERIAL NOTES:  
 ALL STEEL TO COMPLY WITH AS1163 GRADES C350L0 & C450L0



Denotes Critical Dimension

ALL FINISHES HOT-DIP GALVANIZED FINISH UNLESS OTHERWISE SPECIFIED - PROVIDE DRAINAGE HOLES WHERE NECESSARY IF NOT ALREADY DRAWN

All Dimensions Are In Millimetres  
 Break All Sharp Corners and Remove Burrs & Swarf

DATE: 26/09/2006  
 DRN: *CJM*  
 APPROVED:

TITLE: TEK SERIES COMMERCIAL SAFETY RAIL SYSTEM  
**L-BRACKET WALL MOUNTING ASSEMBLY**

MATERIAL: <b>SEE DRAWINGS</b>	DWG No: <b>SRS-400</b>	<b>A3</b>	REV No: <b>1</b>
FINISH: <b>SEE DRAWINGS</b>	SCALE: D.N.S	SHEET 1 of 1	