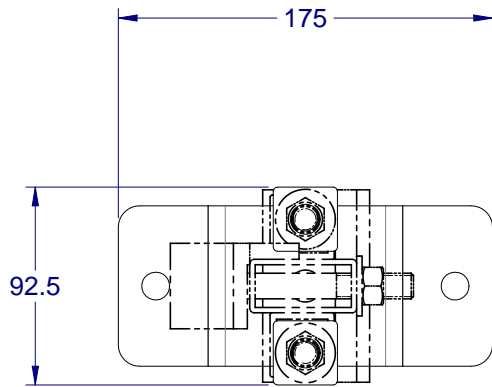
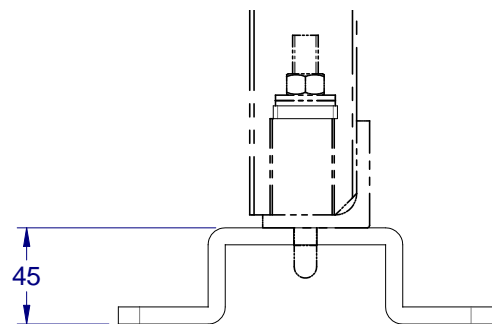


ITEM	DWG	TITLE	QTY	MASS
1	CBF-101	CONCRETE BOLT ON FOOT	1	1.1 kg
2	CBF-102	CONCRETE BOLT ON PLATE	2	0.1 kg

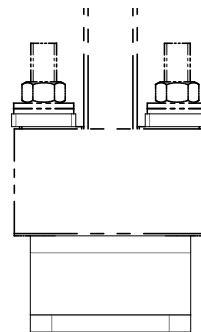
REV	DESCRIPTION / CHANGES	BY	APP'D	DATE



TOP VIEW

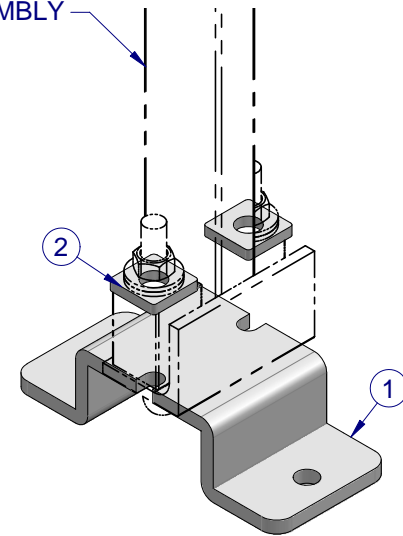


FRONT VIEW



SIDE VIEW

SRS-100 - M-TEK POST ASSEMBLY



ISOMETRIC VIEW


GENERAL WELDING NOTES:
 1- ALL WELDS ON OUTSIDE SURFACES ONLY
 2- MAINTAIN ALL HOLLOW SECTIONS
 3- THICK LINES ON ISO VIEWS SHOW VISIBLE WELD LOCATIONS ONLY

MASS: 1.4 kg



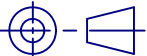
www.csrroofing.com.au

130 Gilba Road
 Girraween NSW 2145
 Ph. (02) 9896-5250
 Fax (02) 9495-7910




COPYRIGHT 2007 TOPCAT / CSR
 WARNING: Copyright in this drawing remains the property of TOPCAT / CSR and copying in whole or part is not permitted without the written authority of the copyright owner

TOLERANCES
 (Unless otherwise noted)
 Whole: ± 0.25 mm
 Decimal: ± 0.1 mm
 Angular: ± 0.25 deg.



Third Angle Projection
 AS 1100

MATERIAL NOTES:
 ALL STEEL TO COMPLY WITH AS1163 GRADES C350L0 & C450L0



Denotes Critical Dimension

ALL FINISHES HOT-DIP GALVANIZED FINISH UNLESS OTHERWISE SPECIFIED - PROVIDE DRAINAGE HOLES WHERE NECESSARY IF NOT ALREADY DRAWN

All Dimensions Are In Millimetres
 Break All Sharp Corners and Remove Burrs & Swarf

DATE: 26/09/2006
 DRN: CJM
 APPROVED:

TITLE: CONCRETE BOLT-ON FOOT
CONCRETE BOLT ON FOOT ASSEMBLY

MATERIAL: **SEE DRAWINGS**

FINISH: **SEE DRAWINGS**

DATE: 26/09/2006

DWG No: **CBF-001**

SCALE: D.N.S

REV No: **A3**

SHEET 1 of 1

REV No: **2**